

WATCH DOGS
LEGION

Street Artist

**CHARACTER
REFERENCE GUIDE**



Street Artist



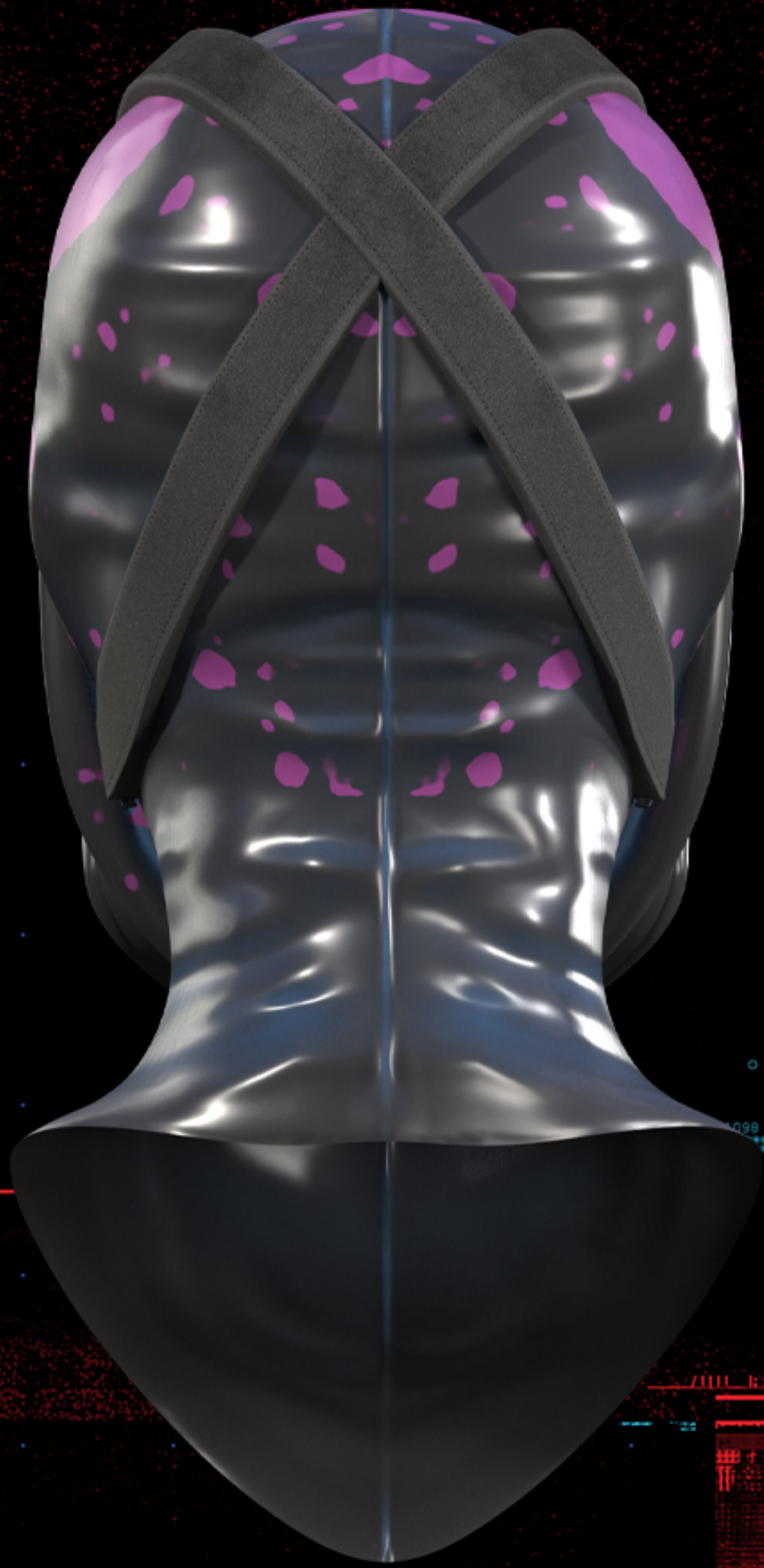
Inspired by the street style and graffiti communities in the real-world London, the Street Artists in Watch Dogs: Legion pull from Alternative, Estate Kid looks, Grime Hip Hop, Afro Punk and Geek Core styles, creating an eclectic range of characters for this role. Layered over their "street style" looks, the Street Artists come equipped with a cool breather mask, a backpack to carry their supplies in and gloves to keep their hands clean when delivering their messages to the world.

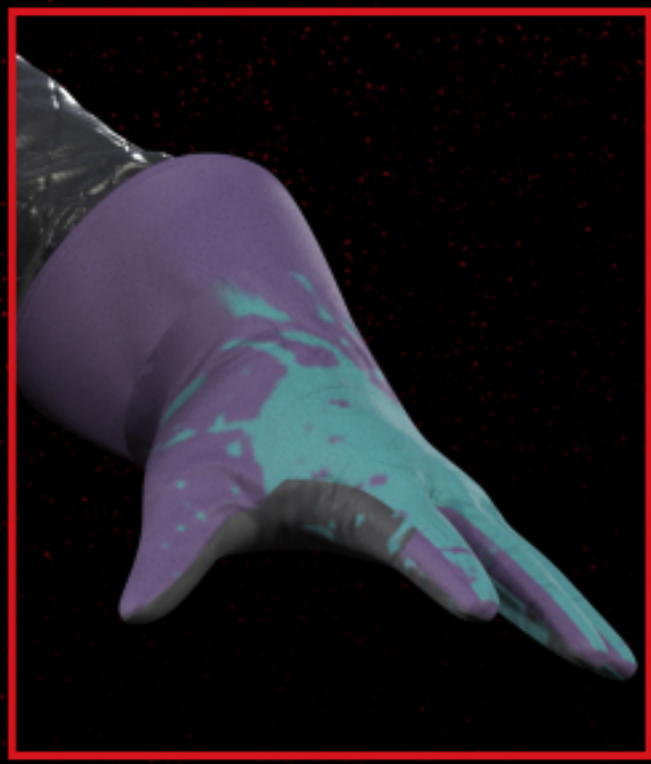


WATCH DOGS
LEGION









WATCH DOGS
LEGION

PANTONE



667 C

PANTONE



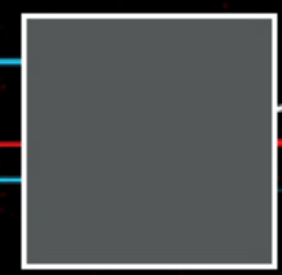
5493 C

PANTONE



COOL GRAY 11 C

PANTONE



425 C

PANTONE



3255 C

PANTONE



3255 C

PANTONE



446 C

PANTONE



191 C

PANTONE



533 C

PANTONE



3255 C

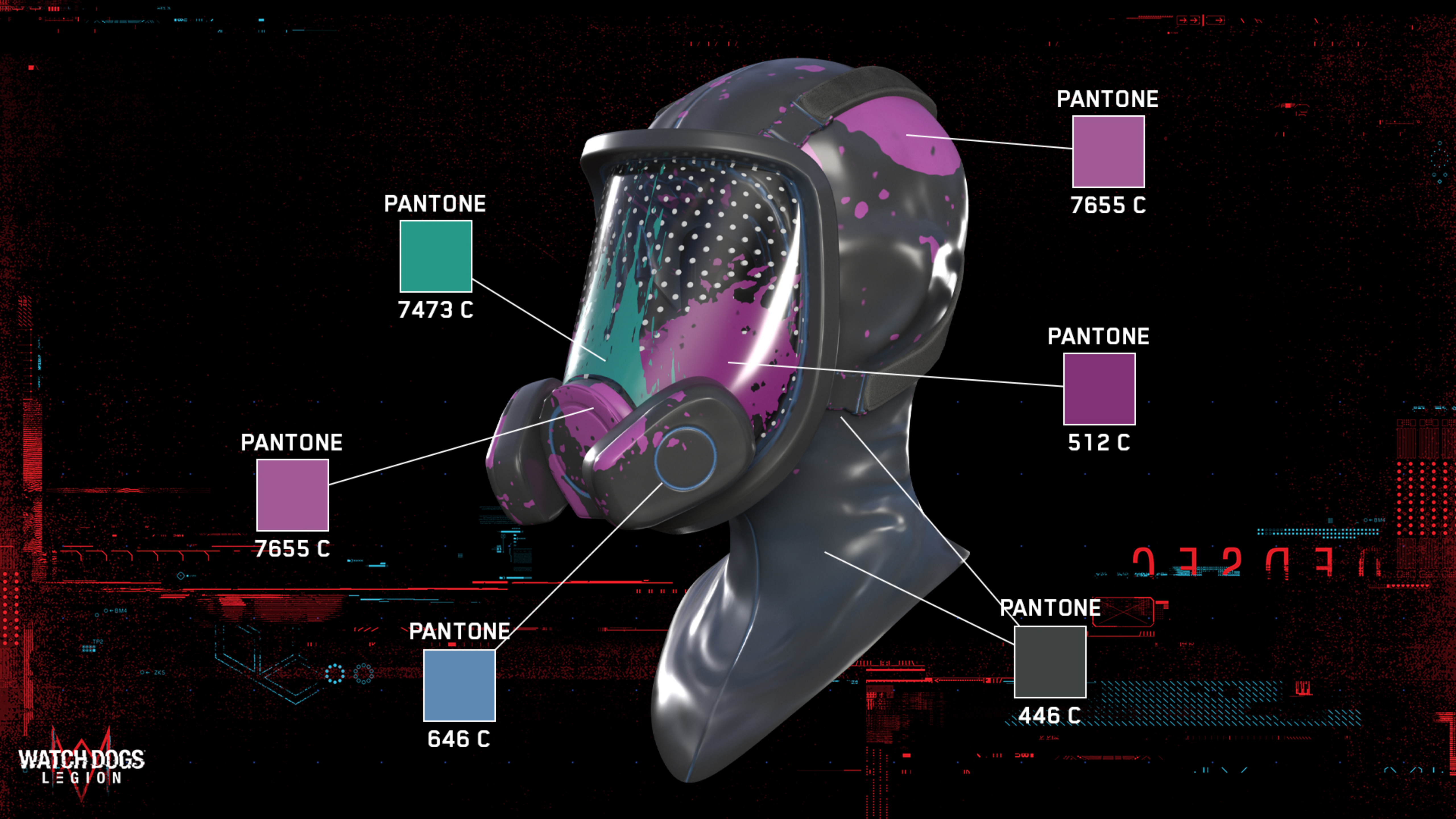
PANTONE



255 C



0 3 2 0 7



PANTONE



7473 C

PANTONE



7655 C

PANTONE



512 C

PANTONE



7655 C

PANTONE



646 C

PANTONE



446 C

**JOIN
THE RESISTANCE**

**WATCH DOGS[®]
LEGION**

#WATCHDOGS